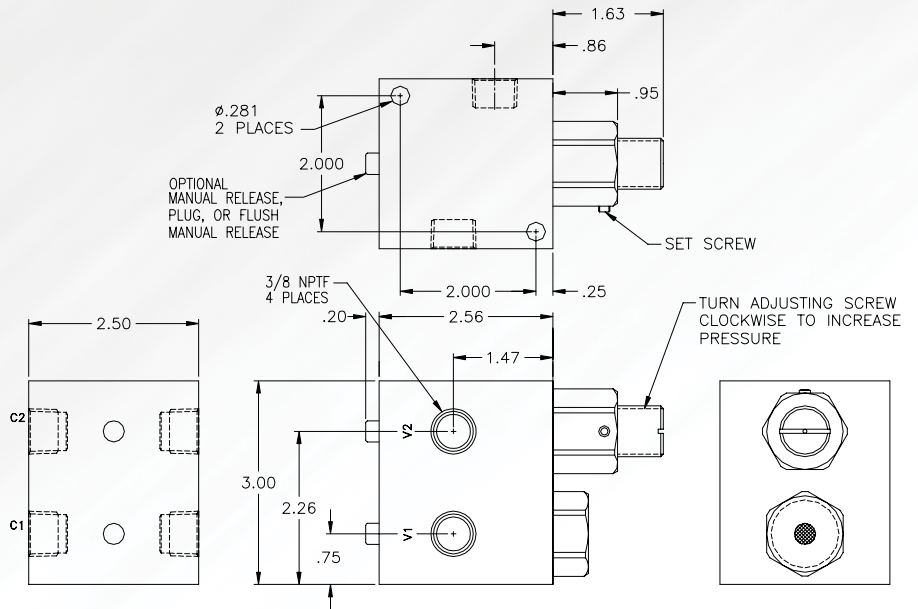


3/8 NPTF Dual Pneumatic Valve to Prevent Runaway Movement & Reduce Bounce



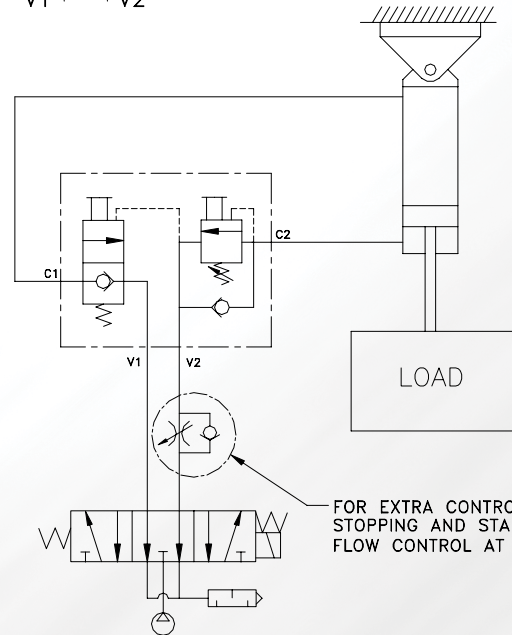
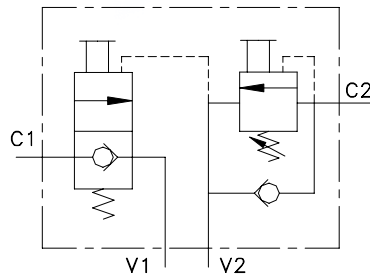
- Dual Manual Release
- .0000522 cc/min Leak Rate
- Applies Constant Back Pressure to One Side of the Cylinder.
- Prevents Runaway Condition

Basic Operation:

This valve is used to reduce jerky motion in pneumatic systems. Back pressure is constantly applied to the air cylinder piston in order to prevent a runaway condition, where the cylinder will take off quickly and then stop when the back pressure builds up enough pressure to stop cylinder movement.

Operating Data:

- Max. Pressure: 150 psi
 Leak Rate: 40 psi
 Counterbalance: The counterbalance should be on the load side where gravity is added to the pressure
 Temp. Range: -20-150 F
 Cycle Rate: 1 cyc./sec. max.
 Flow Capacity (Cv): 3.8
 Cracking Pressure: 1-2 psi (floating check)
 Service: Properly filtered dry and lubricated air.



MODEL NO.	3/8 NPTF
Flush Manual Release	D6CFMC
Manual Release	D6C0MC